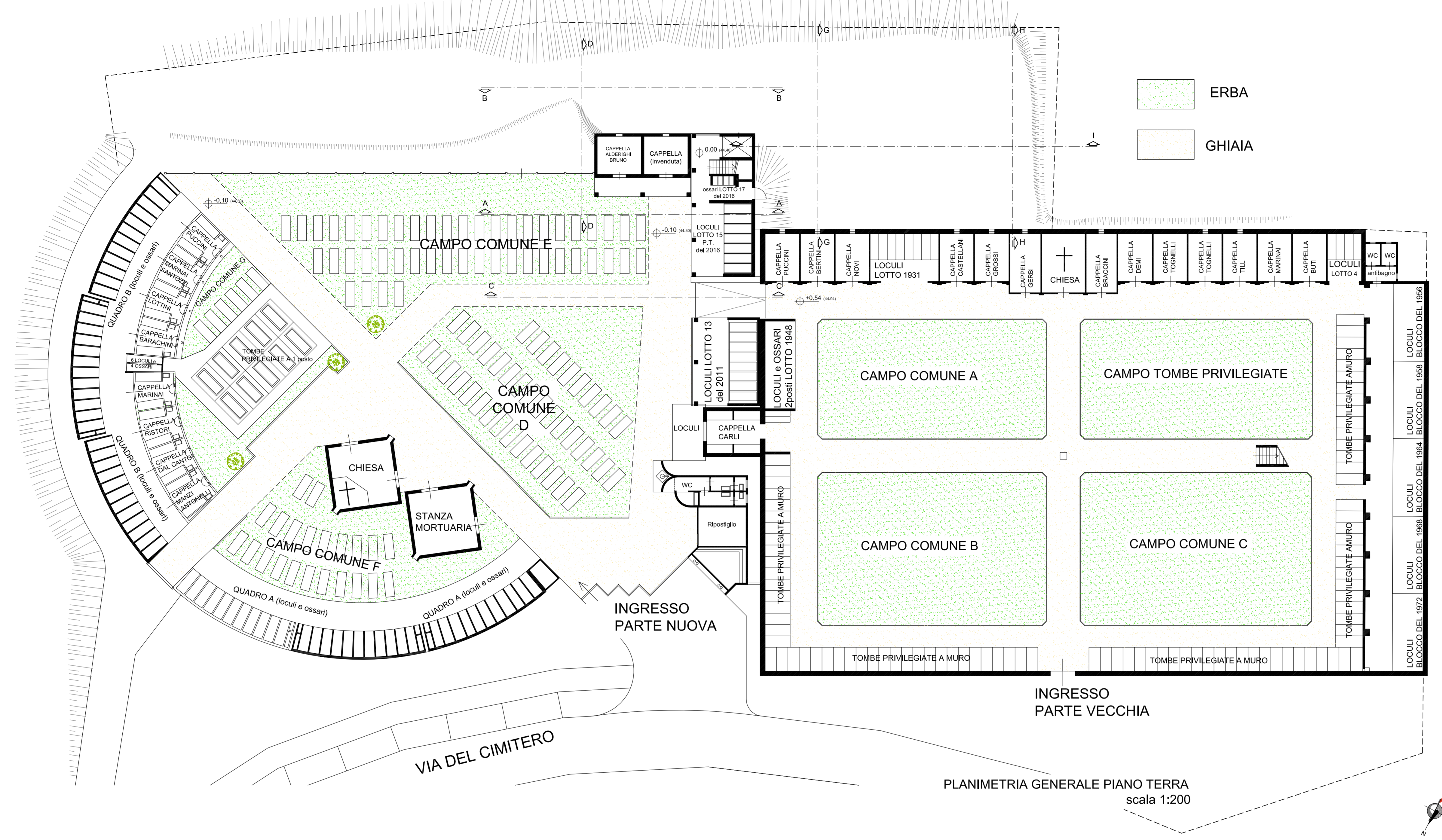


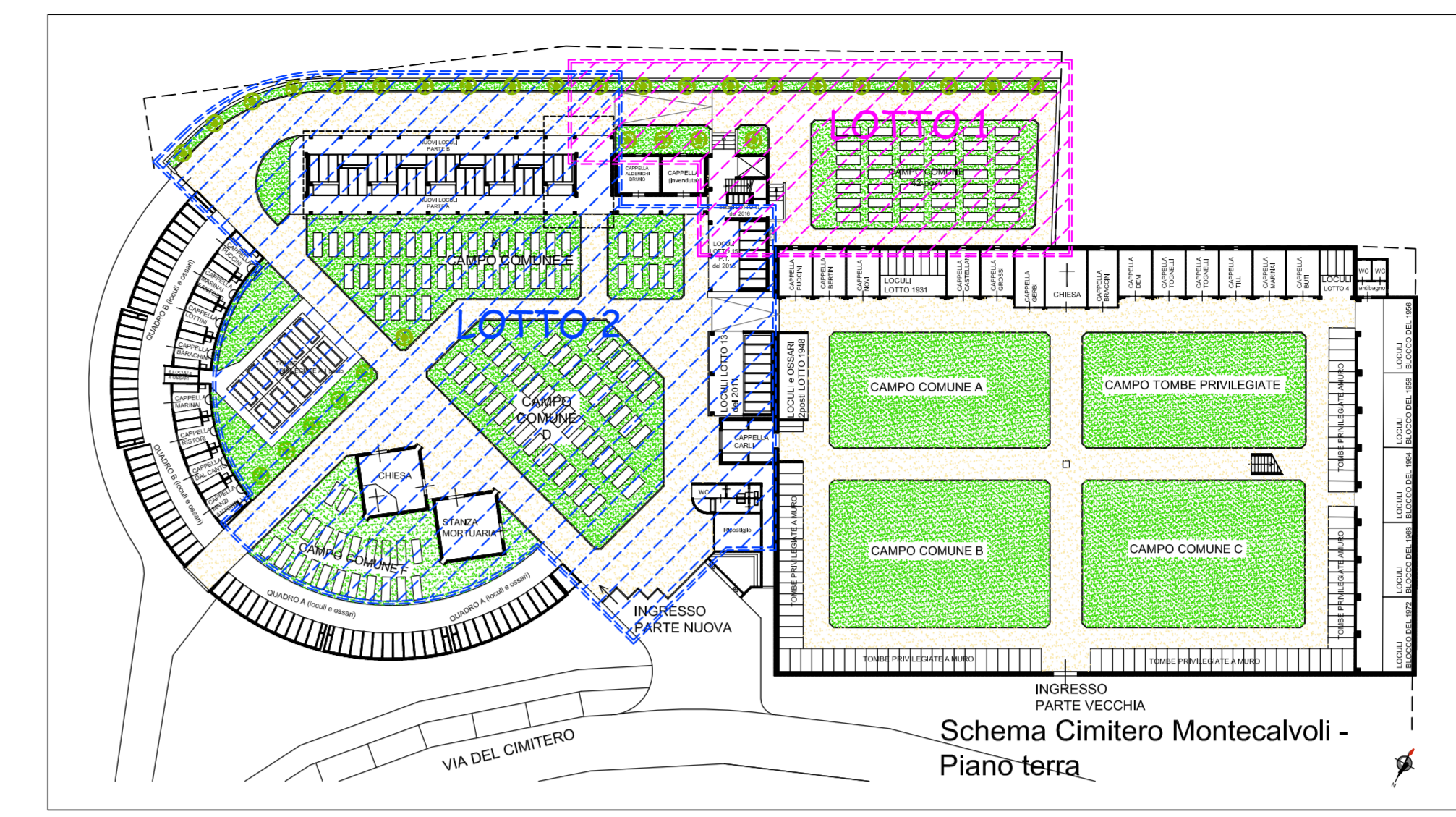


TAVOLA n° **A10**  
26/05/2020  
STATO ATTUALE  
INQUADRAMENTO LOTTI-PIANTA E PROSPETTI  
art. 17, comma 1, punto e) del DPR 207/2010

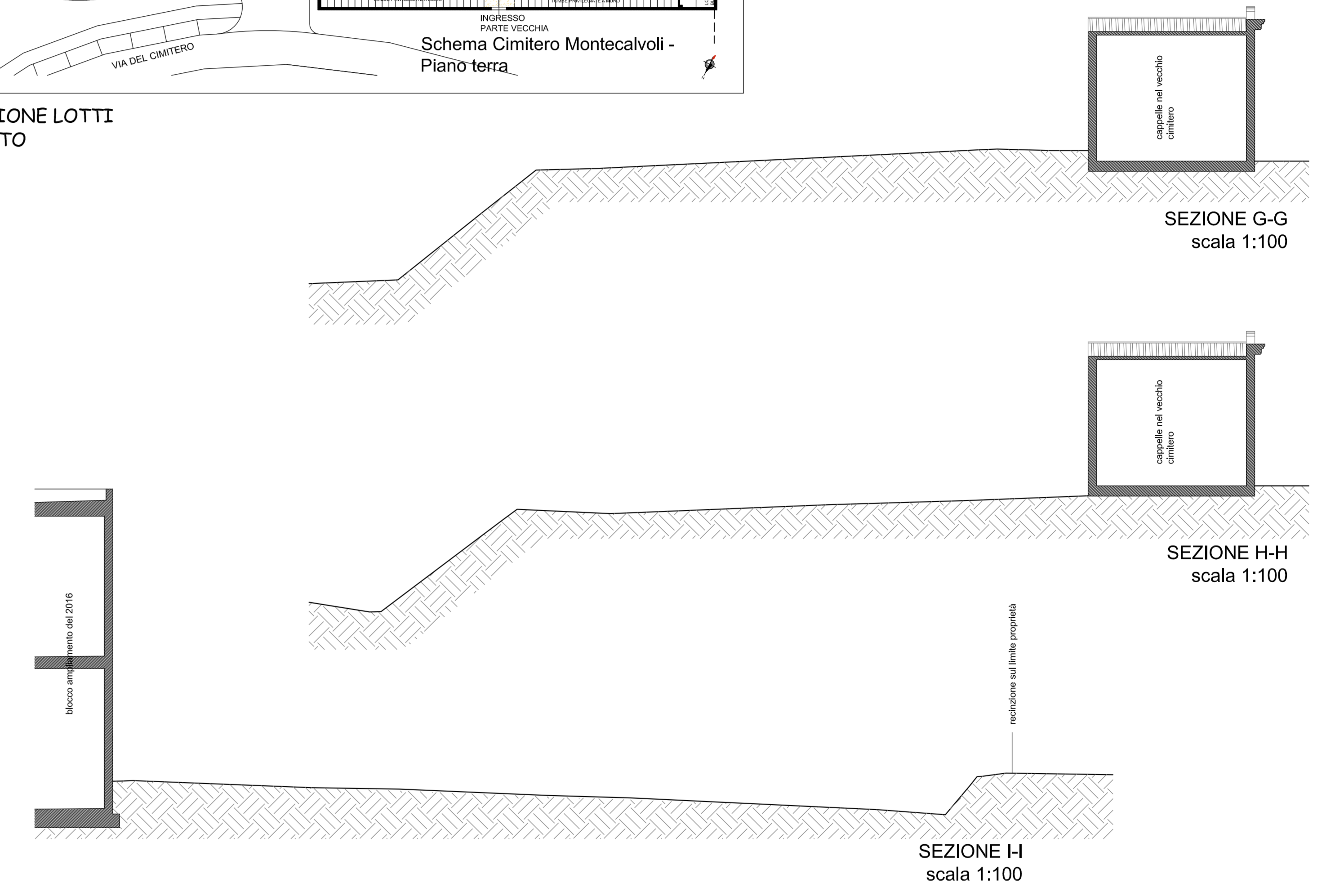
RESPONSABILE DEL PROCEDIMENTO **Dott. Ing. Maurizio Iannotta**  
Sevizio LL.PP. Comune di Santa Maria a Monte  
PROGETTISTA **Architetto Fabiano Bertelli**



PLANIMETRIA GENERALE PIANO TERRA  
scala 1:200



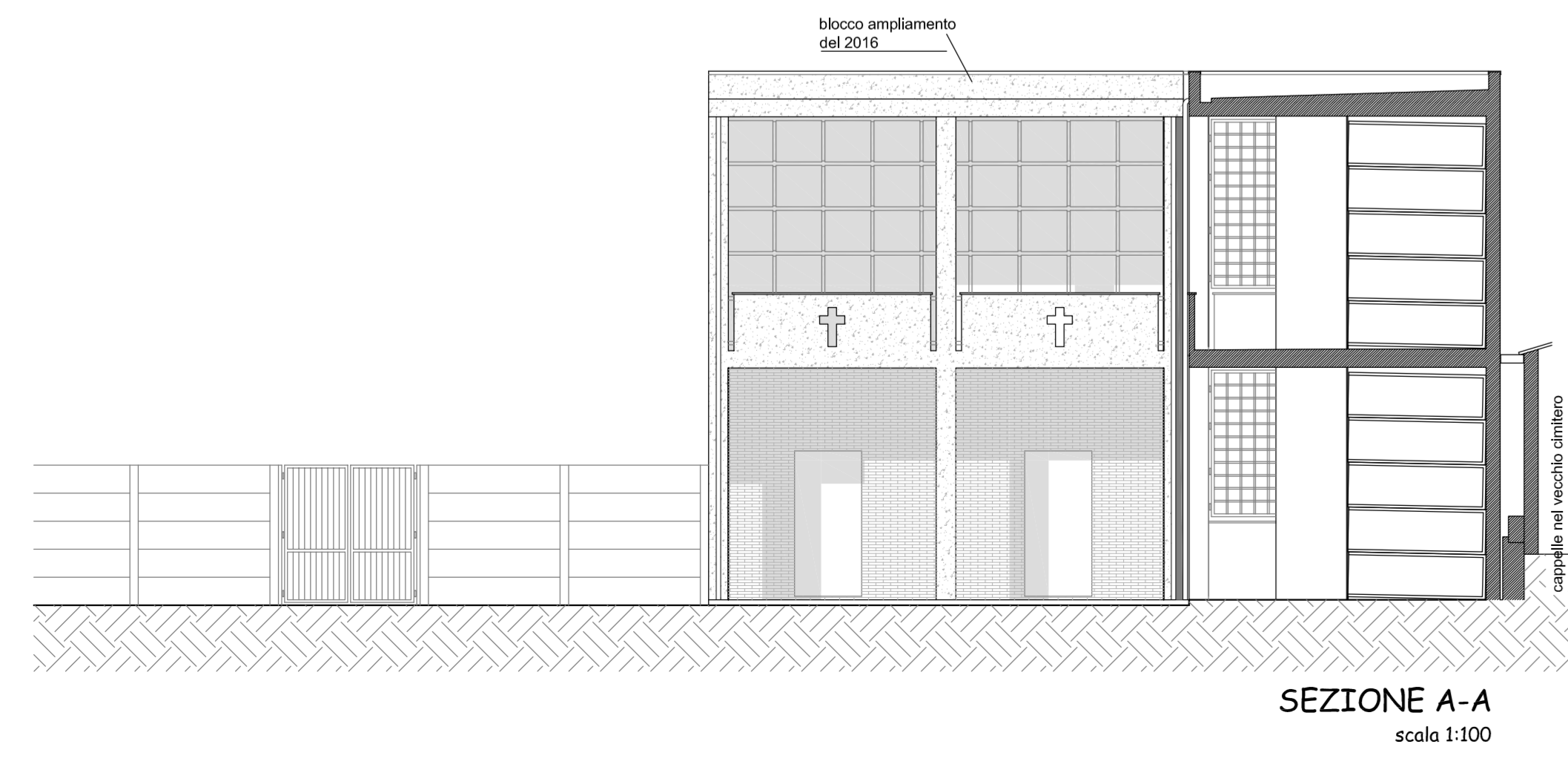
INDIVIDUAZIONE LOTTI DI INTERVENTO



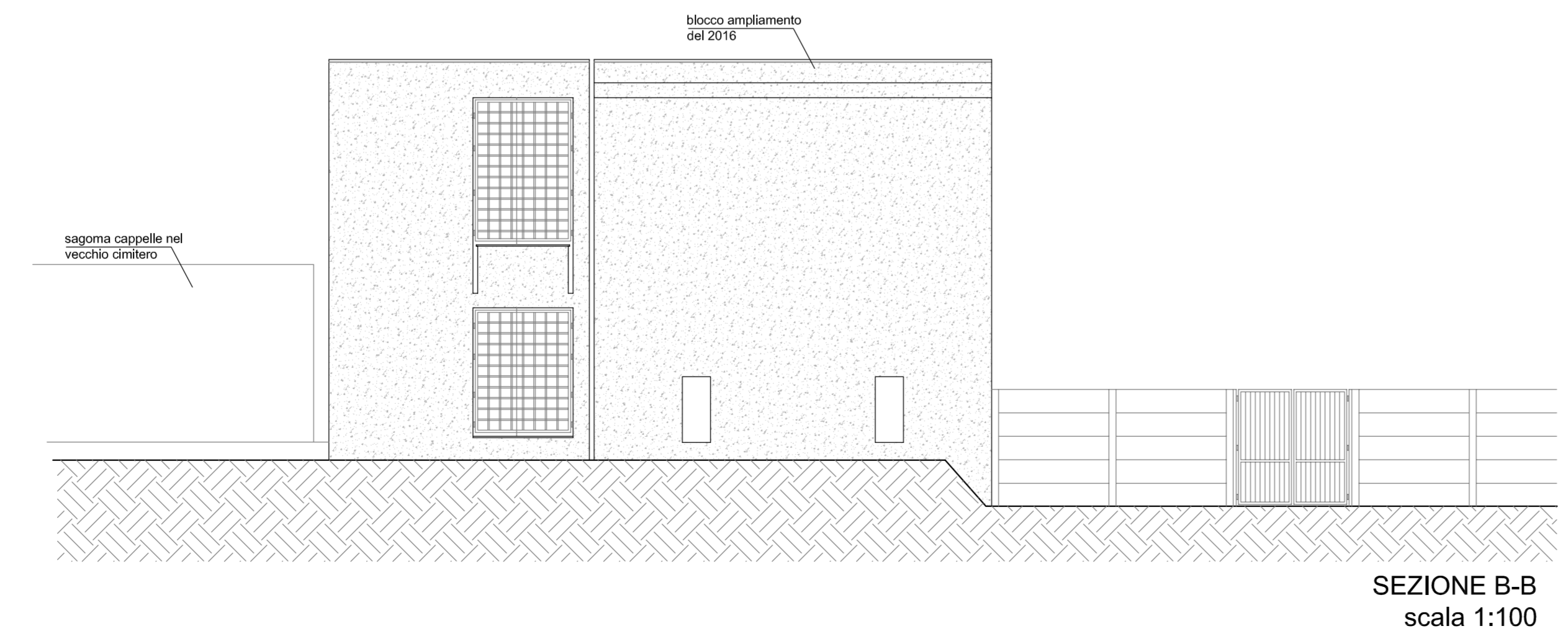
SEZIONE G-G  
scala 1:100

SEZIONE H-H  
scala 1:100

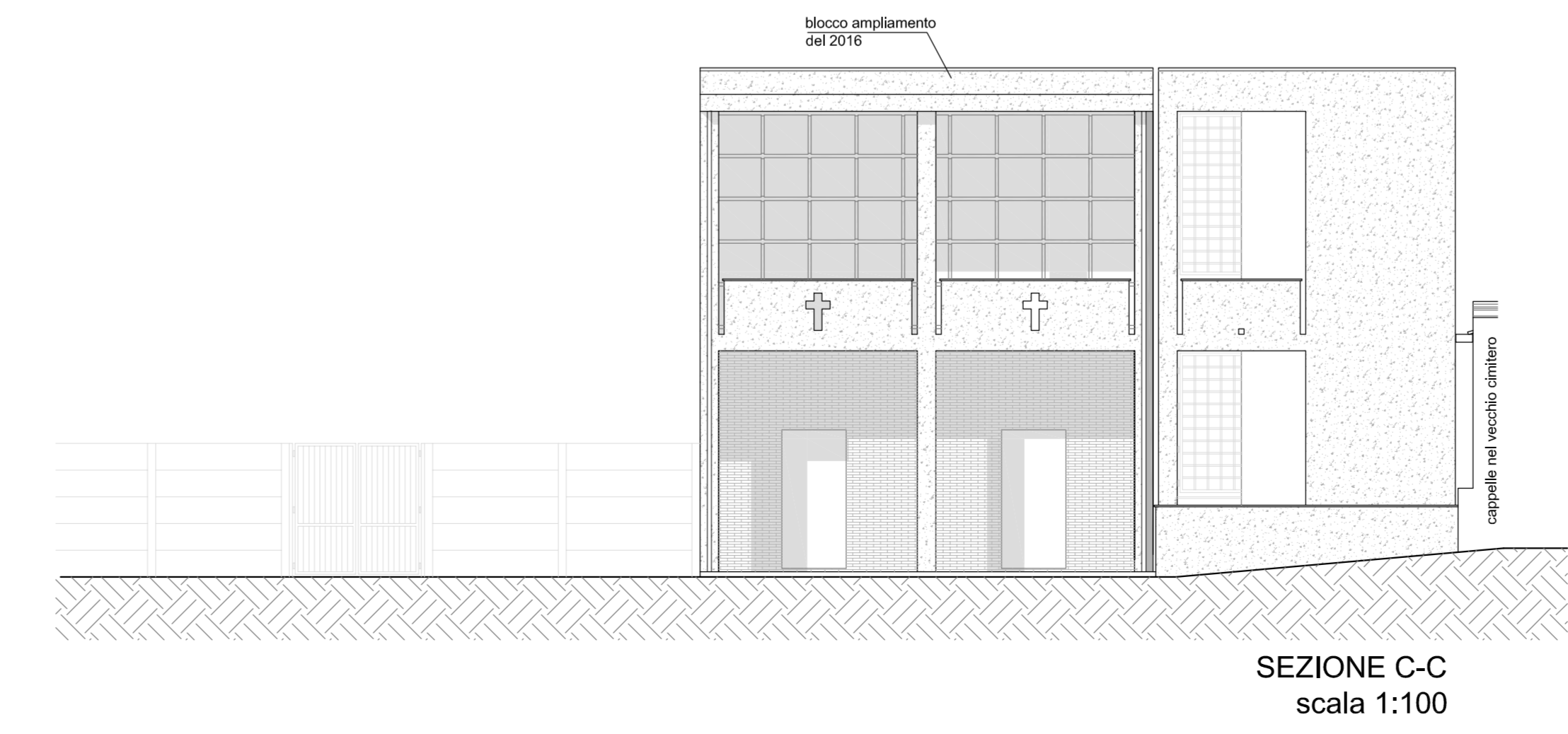
SEZIONE I-I  
scala 1:100



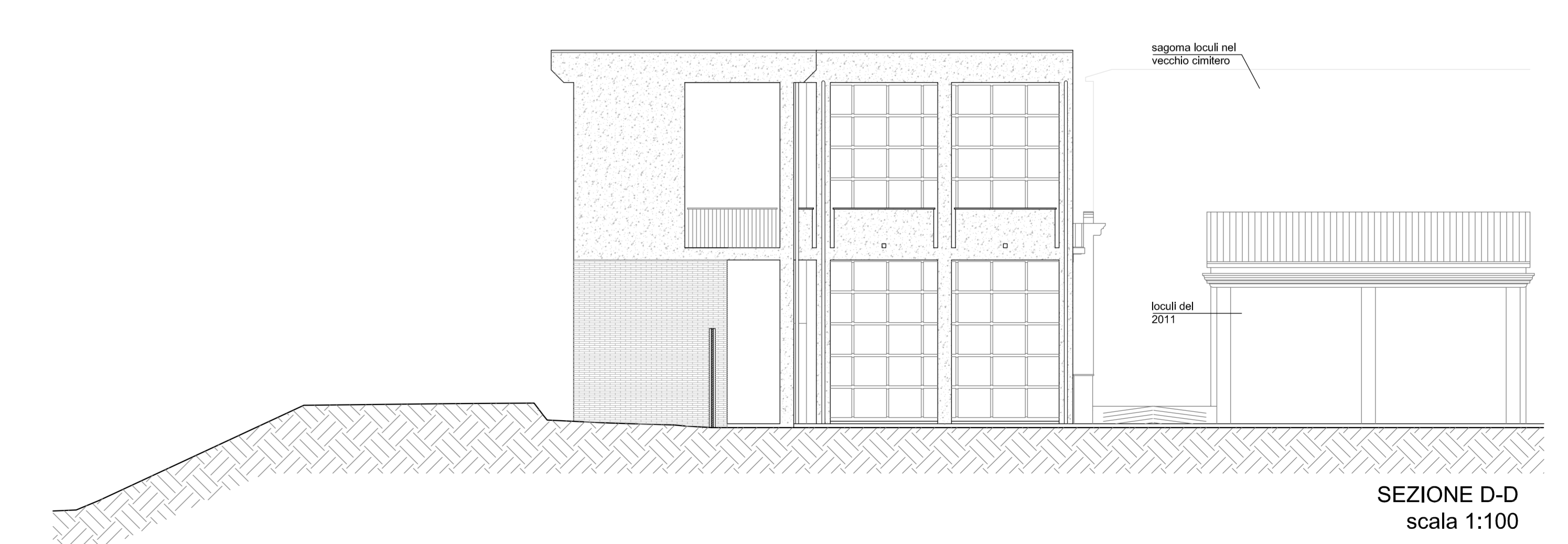
SEZIONE A-A  
scala 1:100



SEZIONE B-B  
scala 1:100



SEZIONE C-C  
scala 1:100



SEZIONE D-D  
scala 1:100